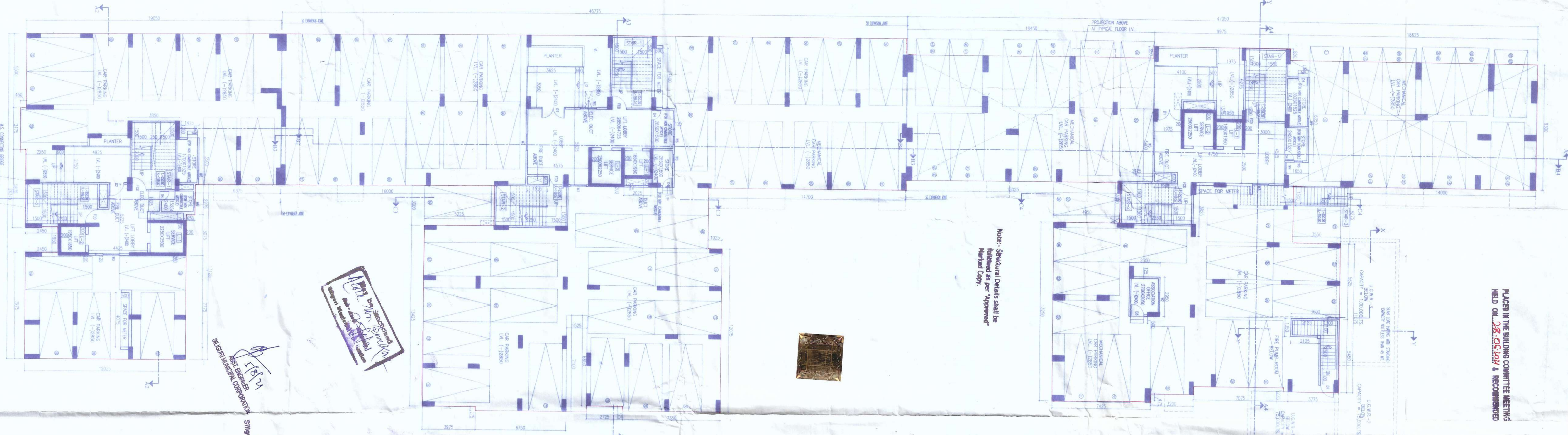


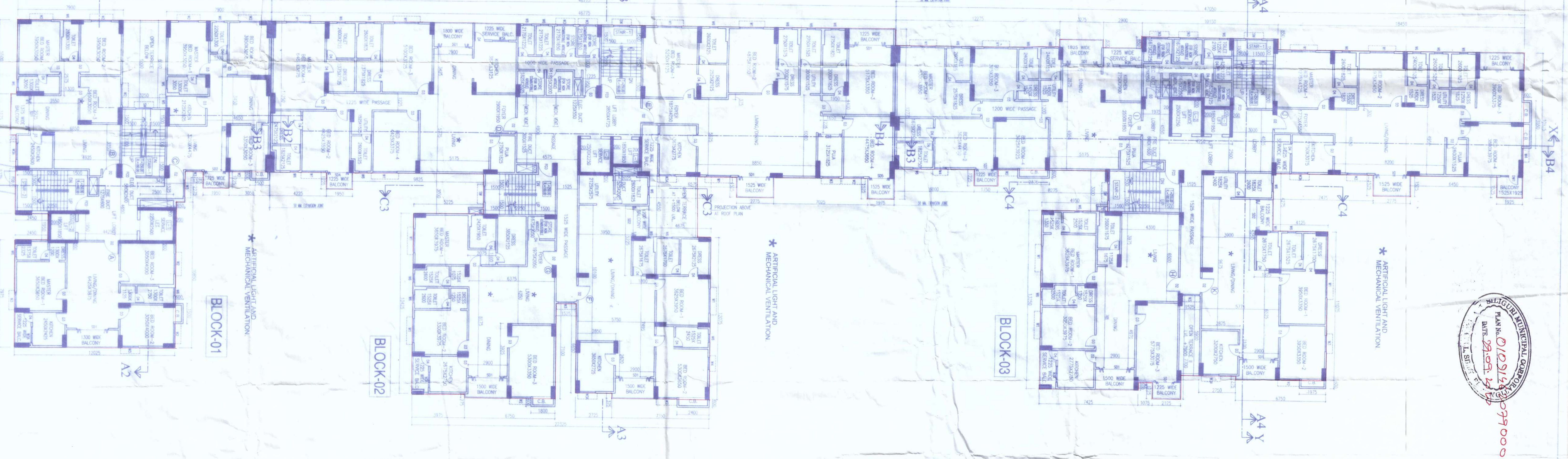
BASEMENT PLAN
TOWER II, BLOCK -01 & BLOCK -03
[RESIDENTIAL]



GROUND FLOOR PLAN
TOWER II, BLOCK -01, BLOCK -02 & BLOCK -03
[RESIDENTIAL]



2ND FLOOR PLAN
TOWER II, BLOCK -01, BLOCK -02 & BLOCK -03



5TH FLOOR PLAN
TOWER II, BLOCK -01, BLOCK -02 & BLOCK -03



PLACE THE BUILDING COMPLEX DRAWINGS
FIELD NO. 25-53531 & RECOMMENDED
SC.NE-1725

Project No. 03-07-141
SC.NE-1725

COMPONENTS APPROVED IN PLAN ARE NOT
VALID FOR CONSTRUCTION BEFORE LIVE PLAN
CLOSING OF THE DRAWING & ROOM CLOSING OF
DRAWING IS ATTACHED



979000533

TOWER II, BLOCK-01			TOWER II, BLOCK-02			TOWER II, BLOCK-03		
NO. OF FLOORS	FLOOR TYPE	AREA (SQ.M)	NO. OF FLOORS	FLOOR TYPE	AREA (SQ.M)	NO. OF FLOORS	FLOOR TYPE	AREA (SQ.M)
01	Basement	1588	01	Basement	1588	01	Basement	1588
02	Ground	1588	02	Ground	1588	02	Ground	1588
03	2nd	1588	03	2nd	1588	03	2nd	1588
04	3rd	1588	04	3rd	1588	04	3rd	1588
05	4th	1588	05	4th	1588	05	4th	1588
06	5th	1588	06	5th	1588	06	5th	1588
07	6th	1588	07	6th	1588	07	6th	1588
08	7th	1588	08	7th	1588	08	7th	1588
09	8th	1588	09	8th	1588	09	8th	1588
10	9th	1588	10	9th	1588	10	9th	1588
11	10th	1588	11	10th	1588	11	10th	1588
12	11th	1588	12	11th	1588	12	11th	1588
13	12th	1588	13	12th	1588	13	12th	1588
14	13th	1588	14	13th	1588	14	13th	1588
15	14th	1588	15	14th	1588	15	14th	1588
16	15th	1588	16	15th	1588	16	15th	1588
17	16th	1588	17	16th	1588	17	16th	1588
18	17th	1588	18	17th	1588	18	17th	1588
19	18th	1588	19	18th	1588	19	18th	1588
20	19th	1588	20	19th	1588	20	19th	1588

ASPECT CALCULATION OF F.F.P. TABLE - 01
TOTAL NO. OF PERSONS
NO. OF PERSONS IN TYPICAL FLOOR = 48 NOS.
NO. OF PERSONS IN UPPER FLOOR = 48 NOS.
NO. OF PERSONS IN LOWER FLOOR = 48 NOS.
TOTAL NO. OF PERSONS = 144 NOS.
AREA REQUIRED FOR F.F.P. = 144 X 1.5 = 216 SQ.M.

ASPECT CALCULATION OF F.F.P. TABLE - 02
TOTAL NO. OF PERSONS
NO. OF PERSONS IN TYPICAL FLOOR = 48 NOS.
NO. OF PERSONS IN UPPER FLOOR = 48 NOS.
NO. OF PERSONS IN LOWER FLOOR = 48 NOS.
TOTAL NO. OF PERSONS = 144 NOS.
AREA REQUIRED FOR F.F.P. = 144 X 1.5 = 216 SQ.M.

ASPECT CALCULATION OF F.F.P. TABLE - 03
TOTAL NO. OF PERSONS
NO. OF PERSONS IN TYPICAL FLOOR = 48 NOS.
NO. OF PERSONS IN UPPER FLOOR = 48 NOS.
NO. OF PERSONS IN LOWER FLOOR = 48 NOS.
TOTAL NO. OF PERSONS = 144 NOS.
AREA REQUIRED FOR F.F.P. = 144 X 1.5 = 216 SQ.M.



PLANNING DEPARTMENT
MUMBAI MUNICIPAL CORPORATION
MUMBAI
DATE: 20/01/2017

NO. OF PERSONS IN TYPICAL FLOOR = 48 NOS.
NO. OF PERSONS IN UPPER FLOOR = 48 NOS.
NO. OF PERSONS IN LOWER FLOOR = 48 NOS.
TOTAL NO. OF PERSONS = 144 NOS.
AREA REQUIRED FOR F.F.P. = 144 X 1.5 = 216 SQ.M.

SHEET NO. 39

PROJECT: PARTIALLY B-G+V STD. COMMERCIAL (TOWER-I) & B-G+V STD. COMMERCIAL PARTY B-G+V STD. (TOWER-II) B-G+V STD. COMMERCIAL (TOWER-III) & B-G+V STD. COMMERCIAL (TOWER-IV) RESIDENTIAL BUILDING

DATE: 08/08/2017

SCALE: 1:100

CLIENT: SANGHI INFRATEL

DESIGNER: SANGHI INFRATEL

ARCHITECT: MASS & VOID ARCHITECTS

FOR SOIL ONLY

PREPARED BY: SANGHI INFRATEL

CHECKED BY: SANGHI INFRATEL

APPROVED BY: SANGHI INFRATEL